

Wetback Line
CRG PROFESSIONAL SERIES
3 & 4 PASS FIRETUBE BOILER DESIGN
Wetback Configuration
30-2000 BHP



CRG Boiler Systems

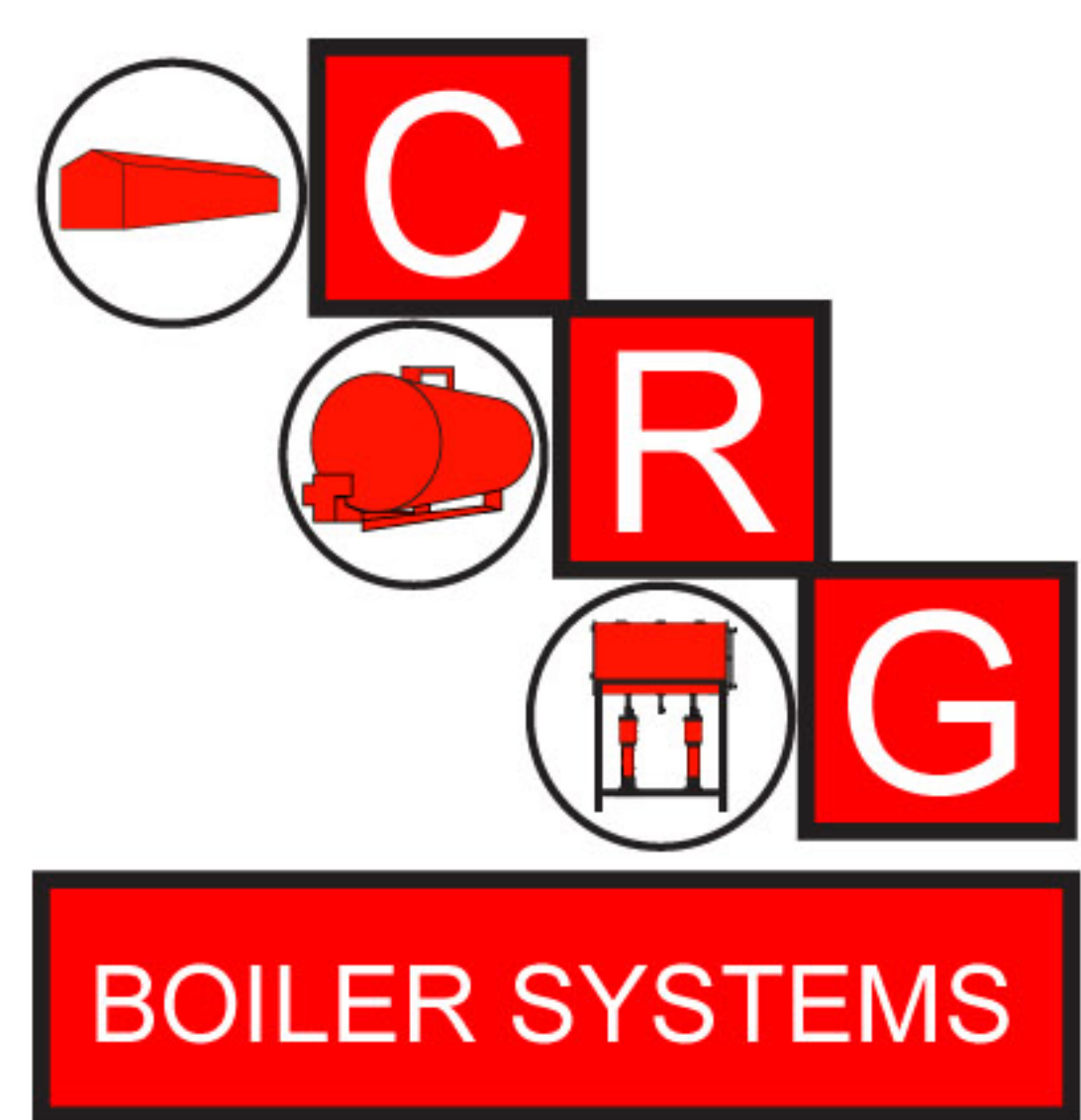
Euro

400

500

Ohio

Scotch Marine Fire Tube Boilers



OHIO *Scotch Marine Boilers*

3-PASS FIRETUBE BOILER DESIGN

Wetback Configuration

100-225 BHP

STEAM PRESSURES

15-300 PSI Section I - 15 PSI Section IV

AVAILABLE WITH LOW NOX

These three pass wetback boilers are specifically designed to provide maximum horse power and meet the Boiler Operator Exemption for the State of Ohio. The Ohio model capitalizes on other design features to compensate for less heating surface. Such as, steam storage, steam release, furnace volume and furnace heat release. With more emphasis in these areas, the Ohio provides the same amount of power as a standard boiler configuration, but allows up to 225 hp with only 358 sq ft of heating surface.

CRG PROFESSIONAL SERIES BOILERS

STANDARD FEATURES

- ✦ Boiler is of the three-pass, scotch type, built and stamped in accordance with the requirements of the ASME Code, and listed by the National Board of Boilers and Pressure Vessel Inspectors.
- ✦ Large combustion chamber with low heat release for complete combustion.
- ✦ Smoke box is rear-mounted with slip-on stack connector.
- ✦ Access to fireside is accomplished with hinged and davited front and rear doors. Flame observation ports are located on front and rear.
- ✦ Openings for vessel cleanout and inspection of waterside are provided with 3" x 4" hand holes, and 12" x 16" manway access.
- ✦ Insulated with 2" high density mineral wool, lagged with 22 gage grip jacketing, baked on finish to resist chipping and fading.
- ✦ Firetubes are rolled and beaded on power boilers, expanded and flared on low pressure boilers.
- ✦ Supports include lifting lugs securely welded to the top of shell; structured steel support legs on skids support the boiler so that special foundations are not required.



**OPERATOR EXEMPT
358 SQFT. DESIGN**

Large Furnace Low Heat Release Standard Steam Trim

- ✦ Operating & high limit pressure control
- ✦ Modulating pressure control (when appl.)
- ✦ Water column with gauge glass, combination low water cut-off & pump control
- ✦ Probe Aux, L.W.C.O.
Steam pressure gauge, syphon & test cock
- ✦ Water column drain valve
- ✦ Safety relief valve(s) per ASME Code

WETBACK CONSTRUCTION ELIMINATES REFRACTORY REAR DOOR & BAFFLES BETWEEN FLUE GAS PASSES

C.R.G. Electric, Inc.
CRG Boiler Systems
Corporate Office
P.O. Box 69008
Odessa, TX 79769
Phone (432) 381-2493
Fax (432) 381-2724

CRG Boiler Systems : Regional Sales

Sales Office
18601 LBJ Freeway
Suite 430
Mesquite, TX
Phone (972) 698-6382

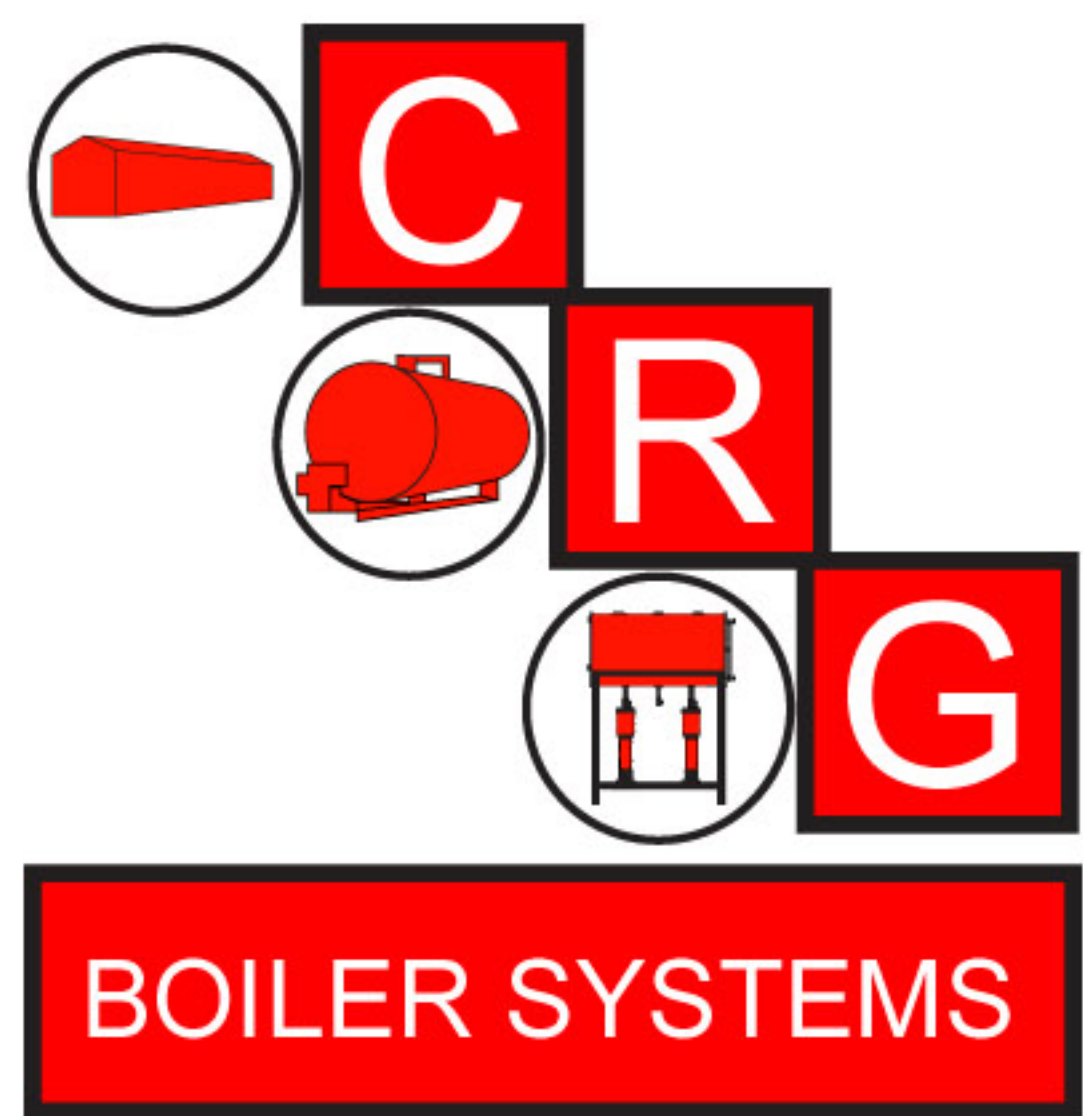
Austin, TX
Phone (512) 288-5150

San Antonio, TX
Phone (210) 226-9905

Houston, TX
Phone (281) 860-9905

crgboilers.com



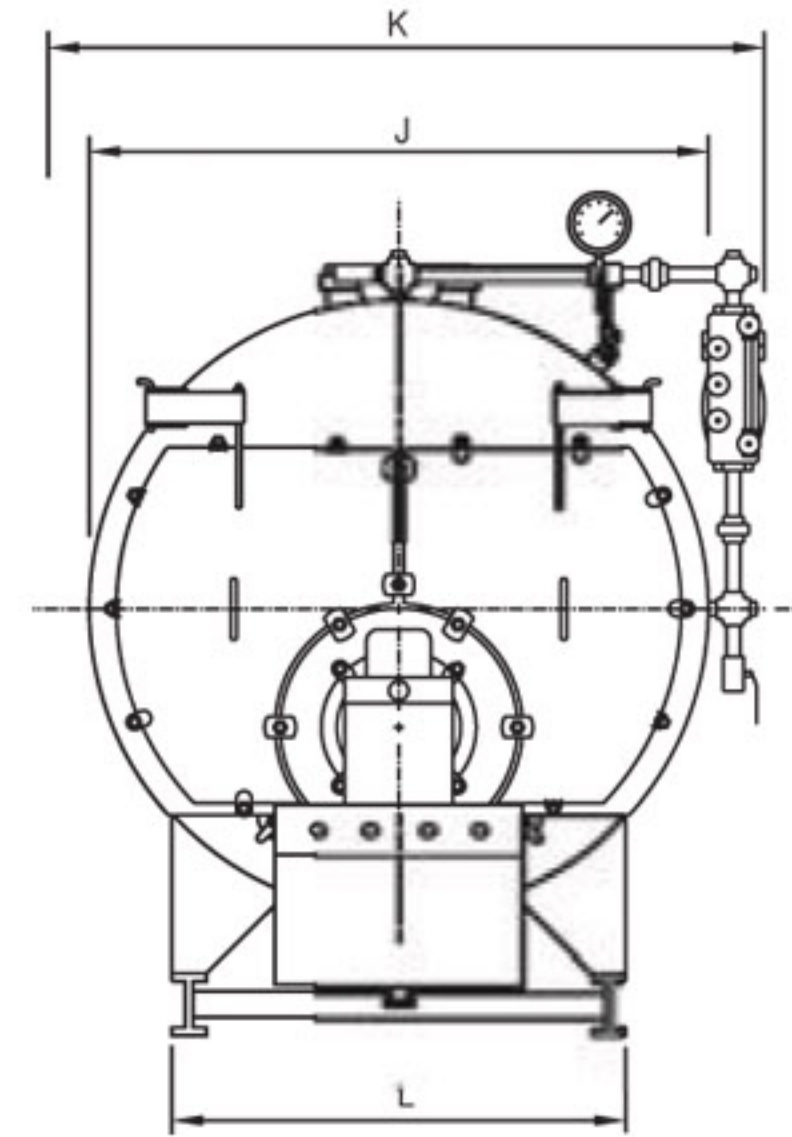


BOILER SYSTEMS

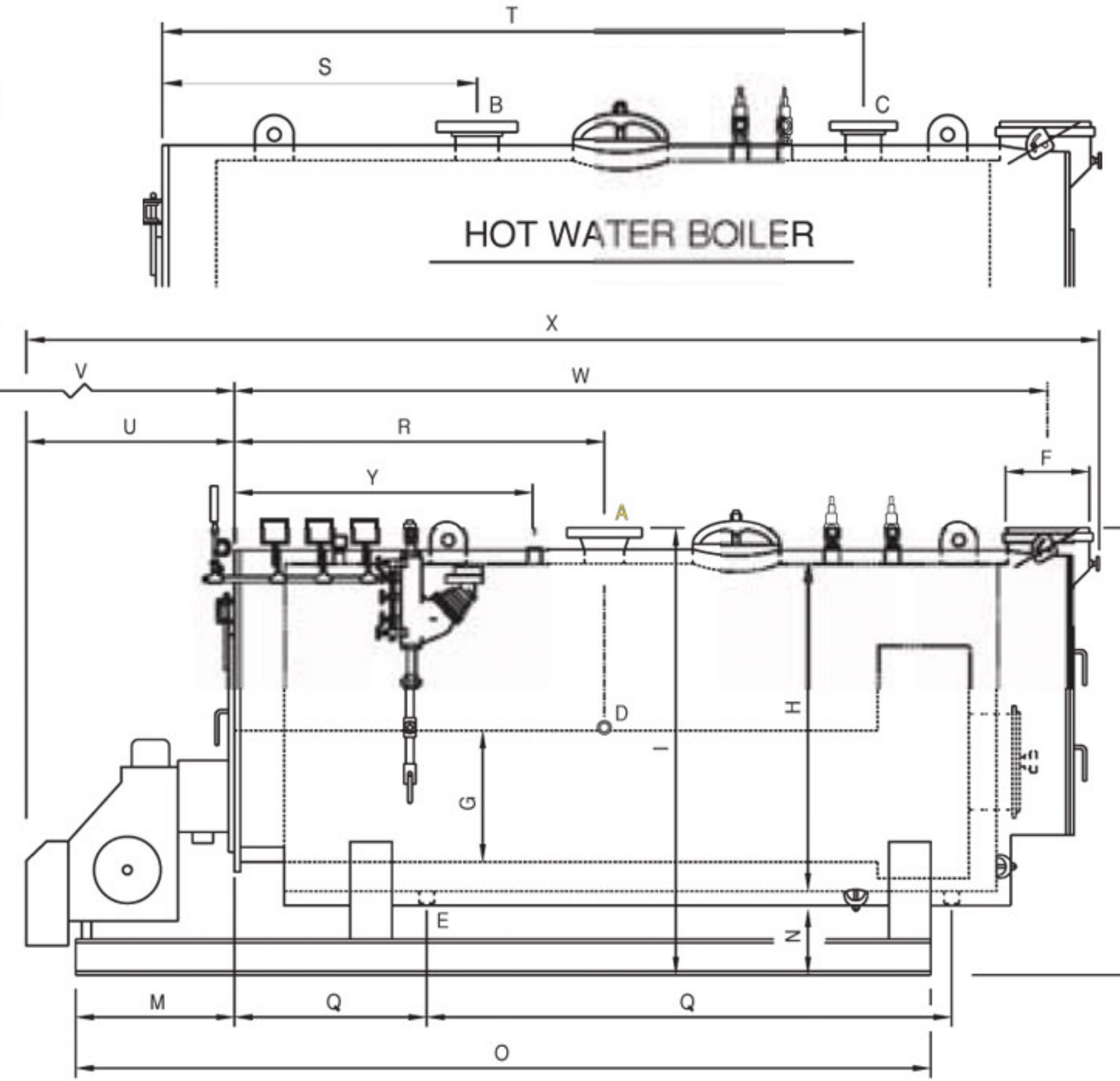
**OPERATOR EXEMPT
358 SQFT. DESIGN**

OHIO

Dimension Diagram



FRONT VIEW



RIGHT SIDE VIEW



OHIO BOILER SPECIFICATIONS BOILER HORSEPOWER

			100	125	150	175	200	225
HEATING SURFACE	FIRESIDE	SQ. FT.	358	358	358	358	358	358
STEAM OUTPUT	FROM & @ 212°	LBS/HR	3,450	4,313	5,175	6,037	6,900	7,762
GROSS OUTPUT		MBH	3,348	4,184	5,021	5,858	6,695	7,532
FIRING RATE GAS	1,000 BTU/CF	CFH	4,200	5,250	6,300	7,350	8,400	9,450
FIRING RATE LP GAS	91,500 BTU	GPH	46	57	69	80.5	92	103
FIRING RATE OIL #2	140,000 BTU	GPH	29.9	37.4	45	52.5	60	67.3
FIRING RATE OIL #5 & #6	150,000 BTU	GPH	28	35	42	49	56	63
A *NOTE:1 STEAM OUTLET SIZE	150 PSI	IN	4	4	4	4	4	4
A *NOTE:2 STEAM OUTLET SIZE	15 PSI	IN	8	8	8	8	8	8
B FEEDWATER CONNECTION SIZE		IN	1.25	1.25	1.25	1.25	1.25	1.25
C BLOWDOWN CONNECTION (BTM)	HIGH PRESS.	IN	1.5	1.5	1.5	1.5	1.5	1.5
D BLOWDOWN CONNECTION (BTM)	LOW PRESS.	IN	2	2	2	2	2	2
E STACK OUTLET SIZE O.D.		IN	16	16	16	16	16	16
F FURNACE O.D.		IN	32	32	32	32	32	32
G SHELL I.D.		IN	60	60	60	66	66	66
H SUPPLY HEIGHT		IN	81.75	81.75	81.75	88.75	88.75	88.75
I WIDTH WITHOUT TRIM		IN	66.5	66.5	66.5	72.5	72.5	72.5
J WIDTH WITH TRIM		IN	79	79	79	85	85	85
K SKID WIDTH		IN	48	48	48	51	51	51
L END OF SKID FROM FRT. PLATE		IN	26.25	26.25	26.25	26.25	26.25	26.25
M SHELL TO FLOOR		IN	15	15	15	16	1446	16
N SKID LENGTH		IN	144	144	144	144	144	144
O STACK OUTLET HEIGHT		IN	82	82	82	89	89	89
P BLOWDOWN LOCATION		IN	27.8125-78	27.8125-78	27.8125-78	27.8125-78	27.8125-78	27.8125-78
Q STEAM OUTLET LOCATION		IN	62.3125	62.3125	62.3125	62.3125	62.3125	62.3125
R BURNER PROJECTION	*STND. BURNER	IN	44	45	45	45	45	45
S TUBE REMOVAL	FRONT	IN	121	121	121	121	121	121
T STACK OUTLET LOCATION		IN	136.8125	136.8125	136.8125	136.8125	136.8125	136.8125
U APPROX. OVERALL LENGTH		IN	192	193	193	193	193	193
APPROX. SHIPPING WEIGHT	150 PSI	LBS	10,050	10,050	10,150	10,850	10,850	10,850
APPROX. SHIPPING WEIGHT	15 & 30 PSI	LBS	9,250	9,250	9,350	10,050	10,050	10,050
WATER CAPACITY - STEAM	NWL	GALS	685	685	685	893	893	893
WATER CAPACITY - WATER	FLOODED	GALS	885	885	885	1,187	1,187	1,187
BOILER HORSEPOWER			100	125	150	175	200	225

*NOTE:1 300# ANSI FLANGE.
*NOTE:2 4" & ABOVE ARE 150# ANSI FLANGE.
*NOTE: 12" X 16" MANWAY.

ALL DIMENSIONS ARE IN INCHES.
CERTIFIED DRAWING AVAILABLE UPON REQUEST.
DIMENSIONS SUBJECT TO CHANGE WITHOUT NOTICE.

C.R.G. Electric, Inc.
CRG Boiler Systems
Corporate Office
P.O. Box 69008
Odessa, TX 79769
Phone (432) 381-2493
Fax (432) 381-2724

CRG Boiler Systems : Regional Sales

Sales Office
18601 LBJ Freeway
Suite 430
Mesquite, TX
Phone (972) 698-6382

Austin, TX
Phone (512) 288-5150

San Antonio, TX
Phone (210) 226-9905

Houston, TX
Phone (281) 860-9905

crgboilers.com

